

# GROHFLEX ESSENCE

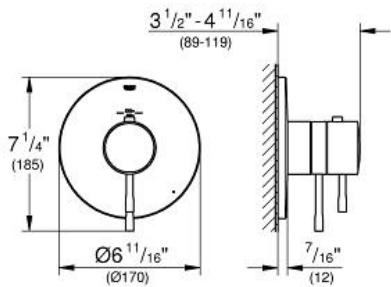
## Single function thermostatic trim with control module

MODEL # 19987

*Pure Freude an Wasser*



GROHE America, Inc | 200 North Gary Avenue, Suite G, Roselle, IL 60172  
Phone: +1 (800) 444-7643 | Fax: +1 (800) 225-2778 | us-customerservice@grohe.com



### Product Description:

Single function thermostatic trim with control module

### Standard Specification:

- For shower only or shower/tub with diverter applications
- **GROHE TurboStat®** technology
- Integrated volume control
- Integrated bypass option when used with diverter tub spout
- 1 axis operation
- Requires GrohFlex™ universal rough-in box (35 026 000) (sold separately)
- **GROHE StarLight®** finish

### Applicable Codes & Standards:

- ASME A112.18.1/CSA B125.1

### Color:

- 19987 001 chrome
- 19987 EN1 brushed nickel