



**PIONEER INDUSTRIES, INC.**  
 3325 S. Garfield Ave.  
 Commerce, CA 90040  
 (800) 338-9468  
 www.pioneerind.com

# INSTALLATION

**Tools:**



Adjustable Wrench



Plumbers Putty



Teflon Tape



Rags

**Model Number: 4MT610**

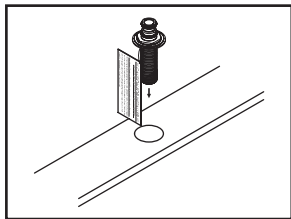


**Warnings and Notes:**

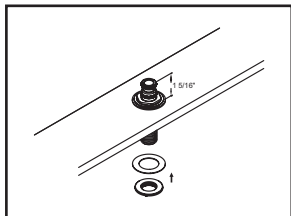
Check with local plumbing code requirements before installation.  
 This product should be installed by a local listed plumber.  
**Do not use plumbers putty on threads.**

**Installation Steps:**

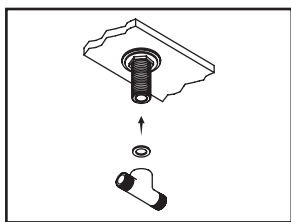
Two Handle Roman Tub Set



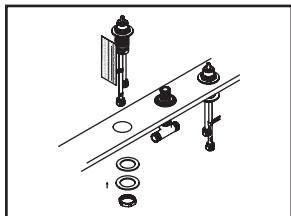
(1) Shut off both water supply lines. Remove test plug from the top of the spout shank. Drop spout shank through spout mounting hole.



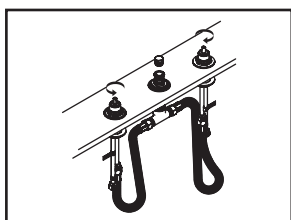
(2) Adjust locknut so that the top of the spout shank is 1-5/16" above finished surface. Slide rubber washer and then securely tighten second locknut from the bottom of the spout shank.



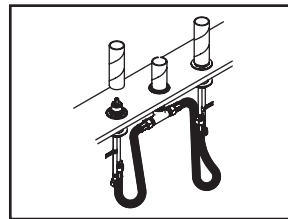
(3) Make sure rubber washer is inside of the "T" connector, attach and tighten "T" connector to the bottom of the spout shank.



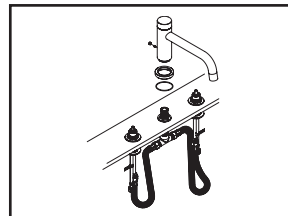
(4) Insert valve through mounting hole. Adjust locknut so that the tip of stem is 1-3/4" above finished surface, adjust outlet of the valve to face center to ensure handle operates in proper direction, slide rubber washer, steel washer and tighten locknut from the bottom of the valve. Install the other valve using the same procedure.



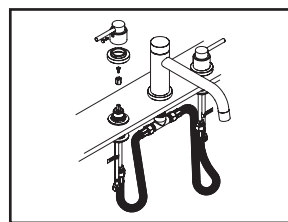
(5) Attach both flex connector hoses to outlets of the valves and "T" connector. Connect water supply lines to inlets of the valves. Apply Teflon tape on thread area of test plug, tighten test plug back to the top of the shank. Turn on water supply lines and check for any leaks.



(6) Install mud guard on the top of the spout shank and valves.



(7) Remove mud guards when it's ready to install trim kits. Remove test plug from the top of the spout shank. Place spout escutcheon with O-ring through the top of the shank, carefully slide spout on the shank so the O-ring on the shank does not get damaged. Tighten Allen screw with the help of Allen wrench provided. Do not overtighten. Place the hole cover to cover the screw hole.

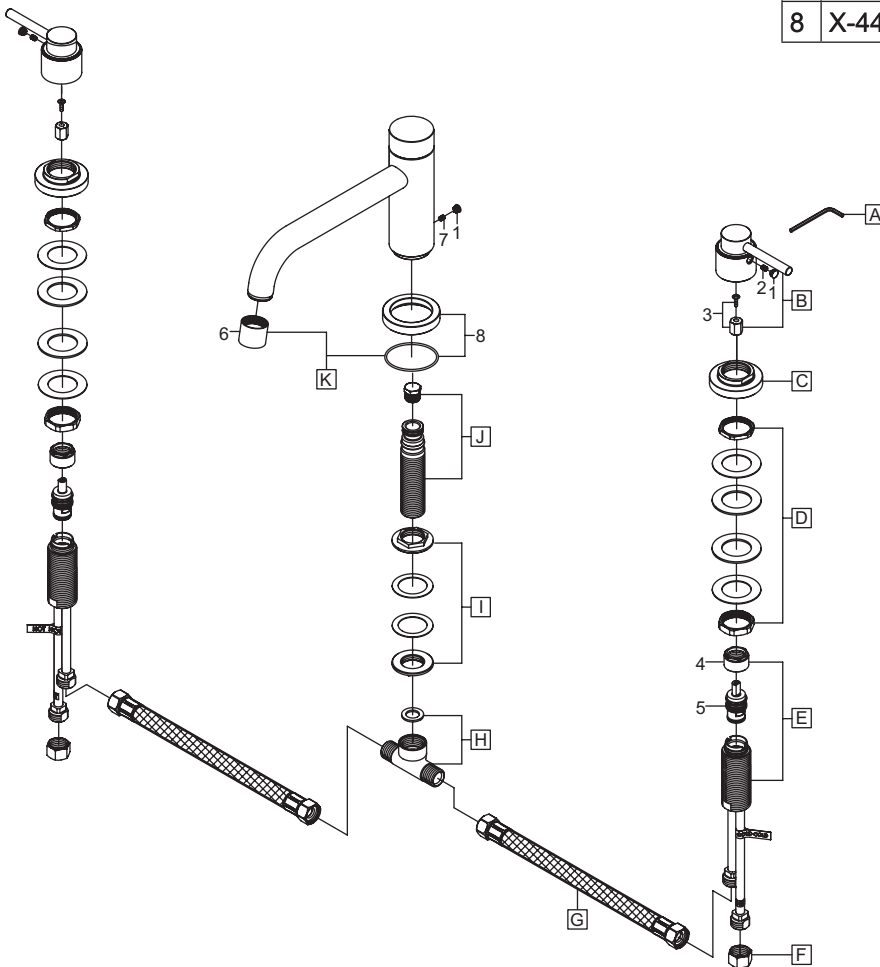


(8) Ensure handles operate in correct direction, tighten Allen screws to secure handles. Remove flow streamer, turn on handles to run water for one minute and check for leaks. Turn off handles and replace flow streamer.

# Exploded Drawing :

\* Note: Please specify finish/color when ordering.

	ITEM #	DESCRIPTION
A	X-4900024	3/32" Allen Wrench
B	X-1400006*	Lever Handle
C	X-4400039*	Valve Escutcheon
D	X-5400003	Valve Mounting Kit
E	X-3900005C,H	Side Valve-Cold, Hot
F	X-4900004	Supply Nut
G	X-4400063	Flex Connector Hose
H	X-4400029	T Connector & Washer
I	X-5400001	Spout Mounting Kit
J	X-5400005	Spout Shank & Test Plug
K	X-2400007*	Spout
1	X-4900044*	Hole Cover
2	X-4900002	3/32" Allen Screw
3	X-4400038	Handle Adapter Set
4	X-4900022	Bonnet Nut
5	X-3900002C,H	Ceramic Stem-Cold,Hot
6	X-4400036*	Flow Streamer
7	X-4400024	3/32" Allen Screw
8	X-4400035*	Spout Escutcheon & O-ring



For more care information or trouble shooting inquiries about your Pioneer product, please call:  
**Pioneer Industries, Inc.** (800) 338-9468  
 Monday-Friday 8 AM to 8 PM EST (5 AM to 5 PM PST)  
[www.pioneerind.com](http://www.pioneerind.com)