



PIONEER INDUSTRIES, INC.
 3325 S. Garfield Ave.
 Commerce, CA 90040
 (800) 338-9468
 www.pioneerind.com

INSTALLATION

Tools:



Model Number: 3MT400, 3MT420, 3MT500

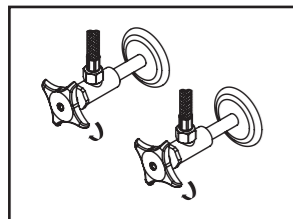


Warnings and Notes:

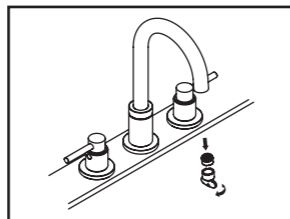
Check with local plumbing code requirements before installation. This product should be installed by a local listed plumber. **Do not use plumbers putty on threads.**

Installation Steps:

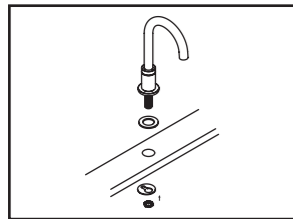
Two Handle Lavatory Widespread Faucet



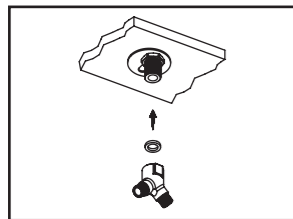
(1) Shut off water supplies. Remove old faucet. Clean mounting surface in preparation for new faucet.



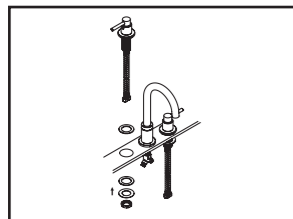
(6) Important: After installation is complete, remove aerator. Turn water supplies on and allow both hot and cold water to run at least one minute each. While water is running, check for leaks. Turn off water and replace aerator.



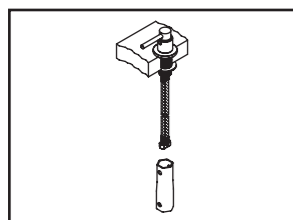
(2) Ensure gasket is under spout escutcheon, place spout escutcheon under the spout. Place spout in position on the sink, slide mounting bracket through spout shank from underneath of the sink, thread mounting nut onto spout shank and tighten the mounting nut.



(3) Place washer inside the Y connector, thread Y connector to the spout shank.

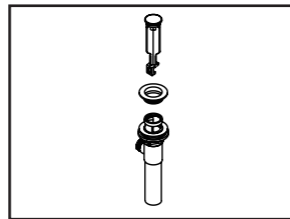


(4) Thread escutcheon with gasket from top of the side valve, attach handle to the side valve with help of 3/32" Allen wrench. Place cold and hot side valves in position on the sink, ensure handles operation turn in correct direction.

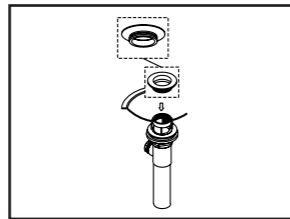


(5) Slide rubber and steel washer through side valve from underneath of the sink, thread and tighten mounting nut onto side valve with help of 1-11/32" socket. Repeat the same procedure on the other side valve. Connect both cold and hot side valve outlet hoses to Y connector.

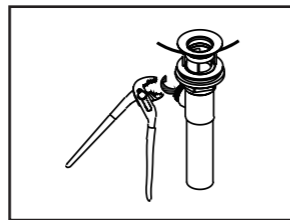
Pop-up Drain Installation:



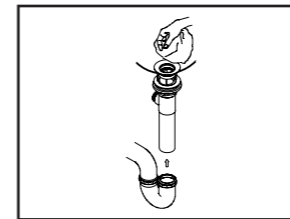
(1) Remove pop-up flange from body



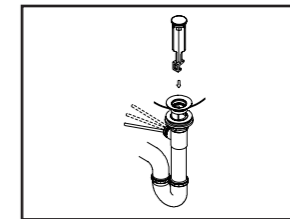
(2) Place a ring of putty on the bottom of flange.



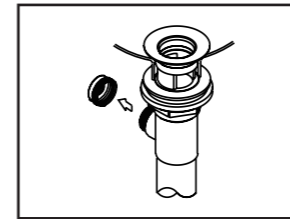
(3) Insert pop-up flange through drain hole and attach flange to body. Ensure the pop-up outlet faces towards the back of the sink. Tighten the locknut securely with a wrench. Do not overtighten.



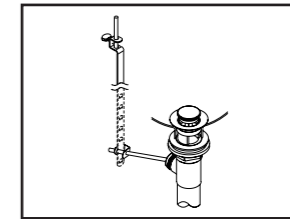
(4) Remove the excess putty. Connect the trap (check manufacturer's instructions for installation)



(6) Push pivot rod down, insert drain plug carefully. Test to ensure drain plug works properly.



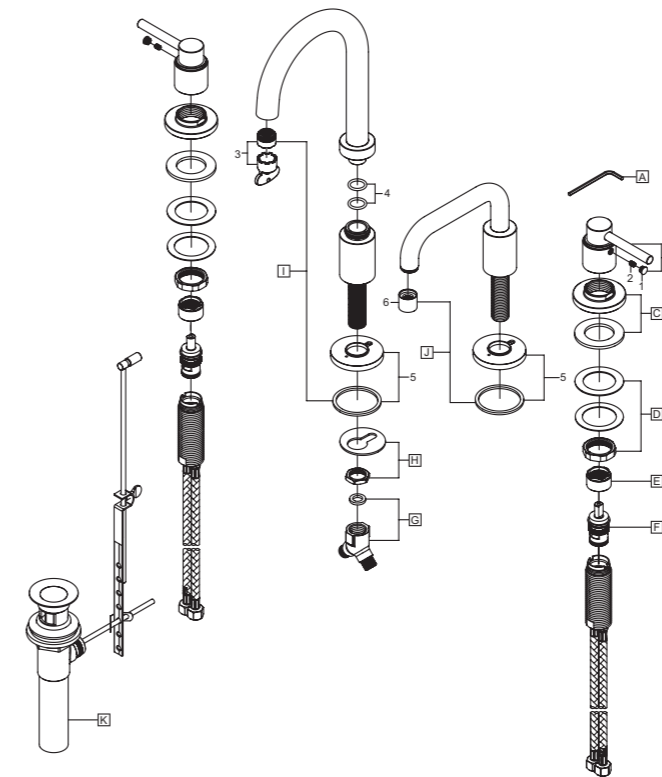
(5) Remove pivot rod nut from pop-up body, ensure the washers is in place, insert pivot rod, tighten pivot rod nut back to pop-up body.



(7) Connect lift rod strap to pivot rod by using clip. Tighten the thumbscrew to connect lift rod strap to pop-up lift rod.

Exploded Drawing : (For 3MT4X0)

* Note: Please specify finish/color when ordering.



	ITEM #	DESCRIPTION
A	X-4900024	3/32" Allen Wrench
B	X-1300006*	Motegi Lever Handle
C	X-4200068*	Escutcheon & Gasket
D	X-5900001	Valve Mounting Kit
E	X-4900022	Bonnet Nut
F	X-3900002C,H	Ceramic Stem-Cold,Hot
G	X-4900020	'Y' Connector & Washer
H	X-5300009	Spout Mounting Kit
I	X-2300025*	Motegi Spout (For 3MT400)
J	X-2300020*	Motegi Spout (For 3MT420)
K	X-4300043*	Brass Pop-Up Drain
1	X-4900044*	Hole Cover
2	X-4900002	3/32" Allen Screw
3	OP-490062	1.2 GPM Aerator (For 3MT400)
4	X-4900012	Spout O-Ring
5	X-4300025*	Spout Escutcheon & Gasket
6	X-4300086*	1.5 GPM Aerator (For 3MT420)

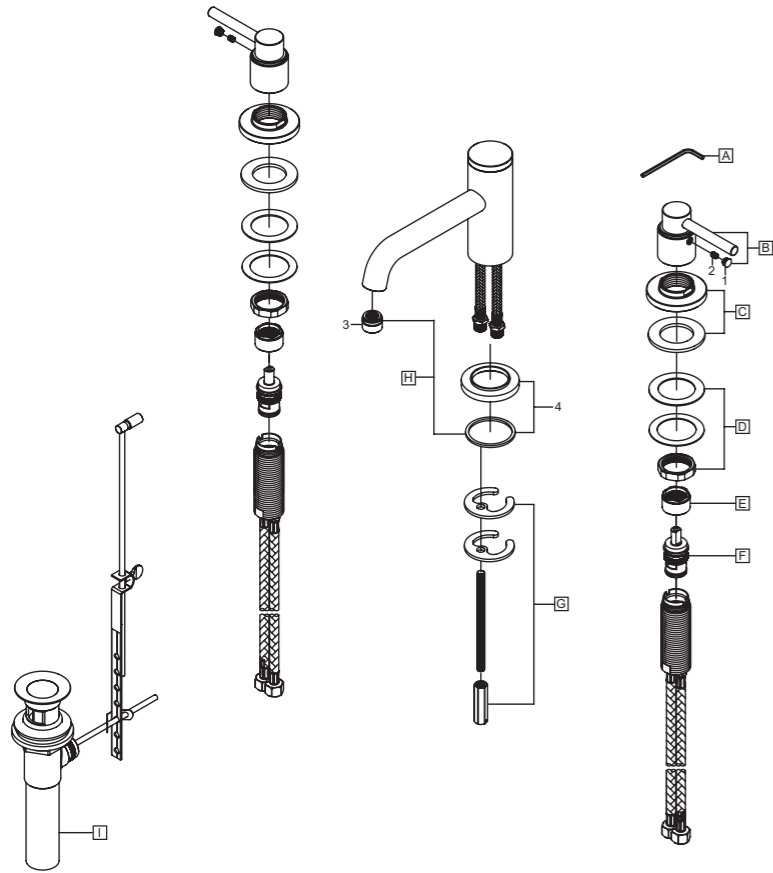


For more care information or trouble shooting inquiries about your Pioneer product, please call:
Pioneer Industries, Inc. (800) 338-9468
 Monday-Friday 8AM to 8PM EST (5AM to 5PM PST)
 www.pioneerind.com

Exploded Drawing : (For 3MT500)

* Note: Please specify finish/color when ordering.

	ITEM #	DESCRIPTION
A	X-4900024	3/32" Allen Wrench
B	X-1300006*	Motegi Lever Handle
C	X-4200068*	Escutcheon & Gasket
D	X-5900001	Valve Mounting Kit
E	X-4900022	Bonnet Nut
F	X-3900002C,H	Ceramic Stem-Cold,Hot
G	X-5300012	Spout Mounting Kit
H	X-2300019*	Bent Nose Spout
I	X-4300043*	Brass Pop-Up Drain
1	X-4900044*	Hole Cover
2	X-4900002	3/32" Allen Screw
3	OP-490063*	1.2 GPM Aerator
4	X-4300084*	Spout Escutcheon & Gasket



For more care information or trouble shooting inquiries
about your Pioneer product, please call:
Pioneer Industries, Inc. (800) 338-9468
Monday-Friday 8AM to 8PM EST (5AM to 5PM PST)
www.pioneerind.com