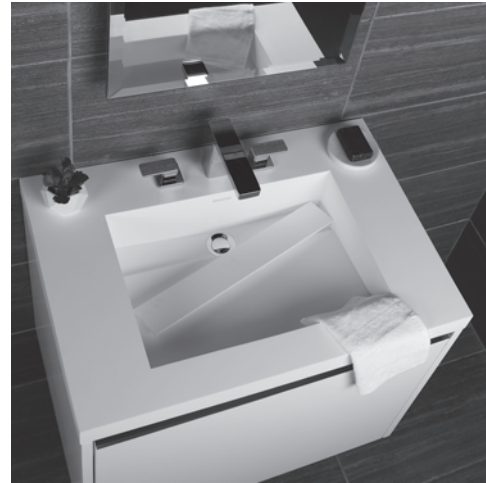


KUBISTA Lavatory

Item: H262T

Features:

- Solid surface lavatory with overflow
- Solid surface drain cover
- Vanity-top or self-rimming installation
- Faucet hole(s) diameter: 1 3/8"
- Material is heat, stain, scratch, chemical, and impact resistant
- American grid drain with overflow is recommended (i.e. 7100-18OF)
- Oversized pop-up drain with overflow can also be used (i.e. 7100-12)
- Third party certified to meet and exceed the following standards/codes:
 - CSA B45.5-11/Z124-2011
 - CMR 248 (Mass. Code of Approval)



Recommended Accessories:

- Item #H262: Wall-mount wooden vanity with one drawer

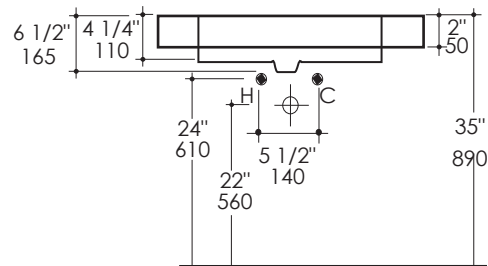
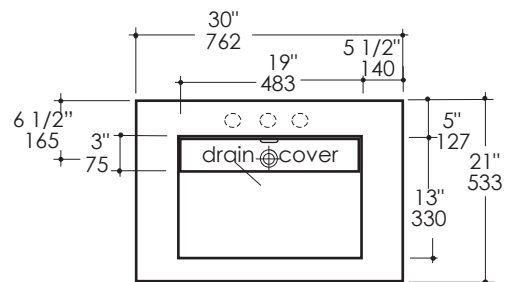
Finish Options:

- 001G - Gloss White
- 001M - Matte White

Faucet Hole Options:

- 00 - None
- 01 - One centered over drain
- 02 - Two, center and right
- 03 - Three in 8" spread (centered over drain)

Product Specifications:



Notes:

Drawings provided herein are meant to give the user an idea of the product and are not made to scale. The size in inches is rounded up to the nearest 1/16". Slight variances can often occur with porcelain, solid surface and woodwork. Therefore, LACAVA will not be held responsible for any cutouts, countertops, or furniture made without the actual product or template from LACAVA.

Plumbing specifications are only a guideline and may need to be altered based on the application.

Product specifications are not binding to the manufacturer and can be changed without notice at any time. Please refer to your shipment for product final sizes.

LACAVA is committed to the highest level of customer service. Please feel free to contact us at 1-888-522-2823 (toll free) or by email at info@lacava.com for technical assistance or any general inquiries.

Rev. 10-19-2017