



VICTORIAN SINGLE LEVER KITCHEN FAUCET



- Brass construction
- Ceramic disc valve cartridge
- 4 Holes Required
- 9-1/2" Swivel spout
- Spout swivels at 360 degrees
- Handspray needs to be mounted minimum 123 mm from the base of cold lever handle
- Lead Free — faucet contains $\leq 0.25\%$ total lead content by weighted volume
- Maximum flow rate: 1.8 gpm (6.8 L/min)

CODES AND STANDARDS

Meets or Exceeds ASME A112.18.1/
CSA B125.1/NSF 61/Section 9

Certified Compliant with 0.25% Weighted
Average Lead Content Regulations

AVAILABLE FINISHES

Polished Chrome
Carbon Bronze
Ultra Steel

FINISH CODE

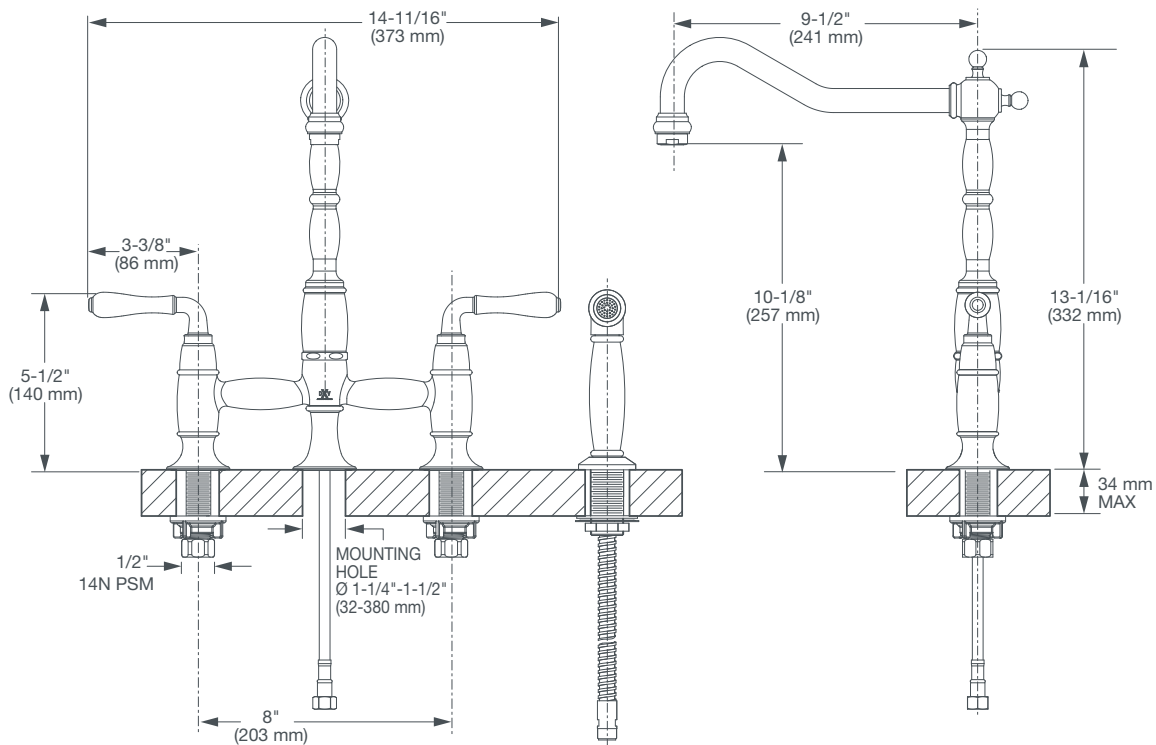
100
110
355

DESCRIPTION

Single Lever Kitchen Faucet

PRODUCT NUMBER

D35402250.XXX



IMPORTANT: These measurements are subject to change or cancellation.
No responsibility is assumed for use of superseded or voided pages.

PART OF LIXIL