



RANDALL®

SINGLE LEVER VESSEL FAUCET



- Cast brass 5-3/4" spout and body
- Ceramic disc valve cartridges
- 3/8" Compression flexible hose supply connections
- Vessel faucet with or without Speed Connect® with 1-1/4" drain
- Lead Free—faucet contains $\leq 0.25\%$ total lead content by weighted volume
- Maximum flow rate: 1.5 gpm (5.7 L/min)
- Low flow rate: 1.2 gpm (4.5 L/min)

CODES AND STANDARDS

Meets or Exceeds ASME A112.18.1/
CSA B125.1/NSF 61/Section 9

EPA WaterSense® High Efficiency
Lavatory Faucet Specification

Certified Compliant with 0.25% Weighted
Average Lead Content Regulations

AVAILABLE FINISHES

Polished Chrome
Brushed Nickel
Platinum Nickel
Satin Brass (1.2 gpm only)

FINISH CODE

100
144
150
427



DESCRIPTION

1.5 gpm (5.7 L/min)
Single Lever Vessel Faucet
Vessel Faucet
Vessel Faucet with Drain
1.2 gpm (4.5 L/min)
Single Lever Vessel Faucet
Vessel Faucet
Vessel Faucet with Drain

PRODUCT NUMBER

D35102151.XXX
D35102150.XXX
D3510216C.XXX
D3510215C.XXX

ROUGH-IN DIAGRAM
SHOWN ON NEXT PAGE



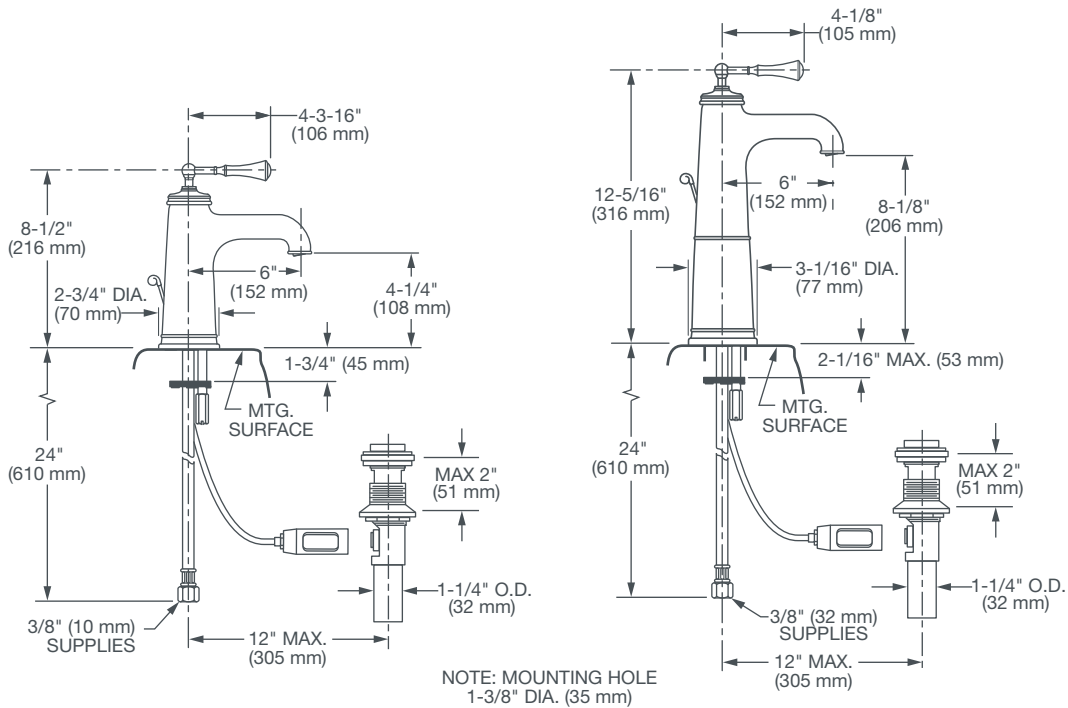
Meets the Americans with Disabilities Act
Guidelines and ANSI A117.1 Requirements
for the physically challenged.



RANDALL®

SINGLE LEVER

VESSEL FAUCET



IMPORTANT: These measurements are subject to change or cancellation. No responsibility is assumed for use of superseded or voided pages.

PART OF LIXIL

©2018 AS America Inc.

Revised 1/18

www.d xv.com